

IRONMONGERY RANGE 2020



HANDLES



Finish: SSS
Rose thickness 10mm
Lever dia 19mm
Lever inside projection 50mm

Conforms to EN 1906:2010 37-1130B Conforms to BS8300
(DDA compliant) Tested to 200,000 cycles
FD30/60
Push fit Rose
Bolt through and screw fixings included Microtight spindle, Sprung

ROUND ROSE LEVER

Code: BV3001

Finish: SSS
Straight Pull Handle
Bolt through, Back to Back Pair
Fixings for glass available for all sizes
*DDA Compliant

Available sizes:
19 dia x 225 c/c, 263mm overall (BT & SSS only)
32 dia x 300 c/c, 450mm overall*
32 dia x 450 c/c, 600mm overall*



T BAR PULL HANDLE

Code: BV3002



Finish: SSS
Straight Pull Handle
Available bolt through, back to back pair
Surface fix round roses available for 19mm dia
*DDA Compliant

Available sizes:
19 dia x 150, 225, 300*, 400*, 600* mm (SSS only)
22 dia x 400* mm
25 dia x 300*, 425* (BT only), 450*, 600* mm (All sizes SSS only)
32 dia x 450*, 600*, 900* mm (BB SSS only)

PULL HANDLE

Code: BV3003

HINGES



Finish: Satin Stainless Steel (SSS)

Radius corners
Suitable for residential and commercial use
Screw fixings supplied
CE certified and Fire rated to FD30/60

RADIUS CORNER HINGES

Code: BV3004

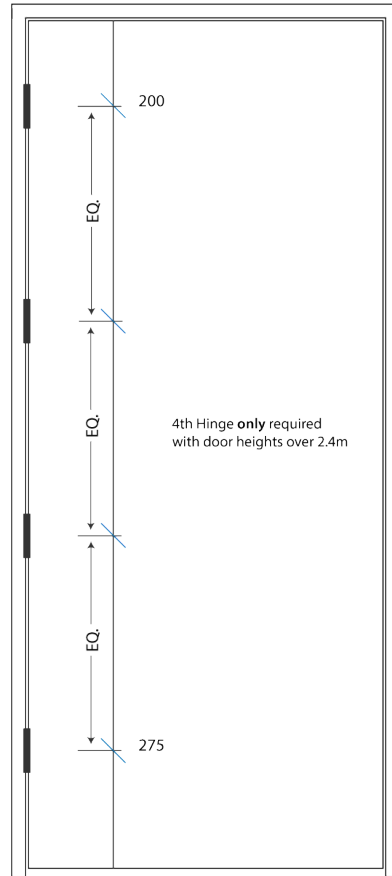
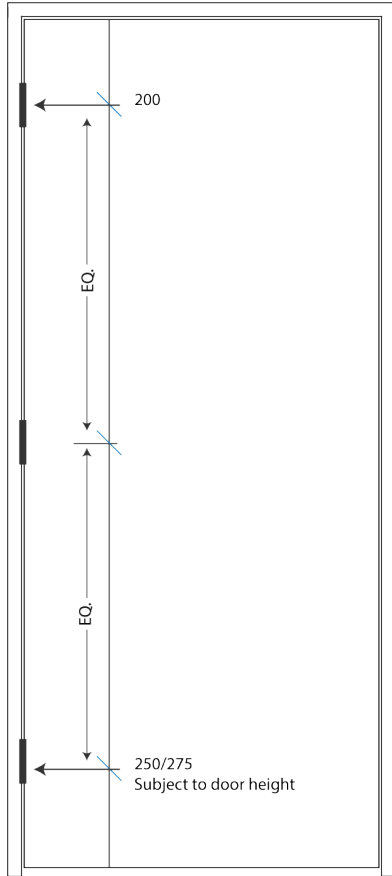
HINGE MACHINING

Our hinges are machined for using CNC machinery to our standard BV positionings, or to your specific requirements.

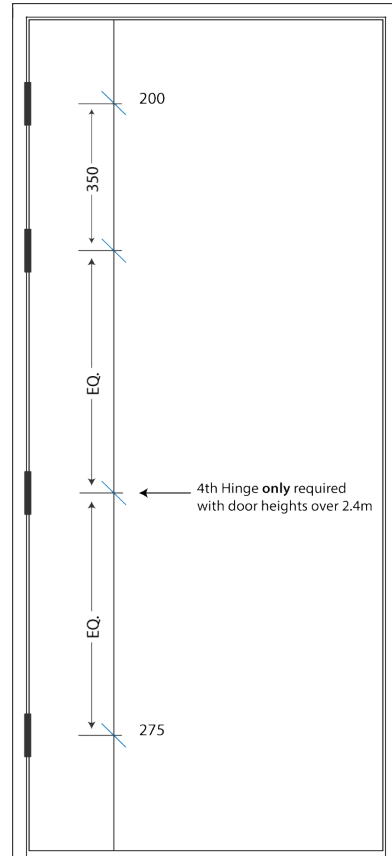
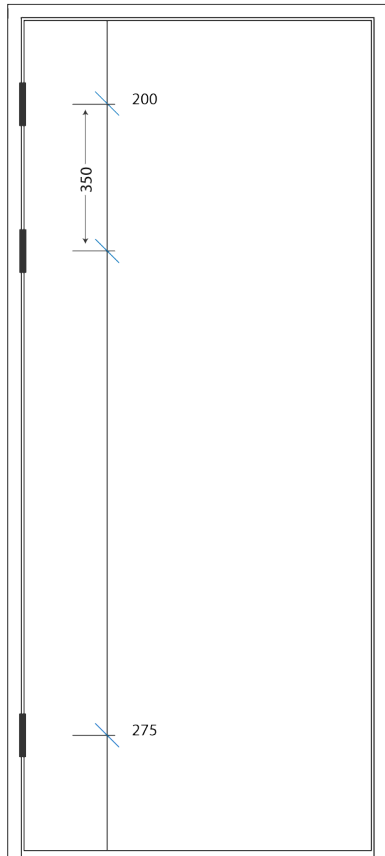
Birmingham Veneers will machine our own timber doors and frames as well as bespoke-made doors to suit your aluminium frames.



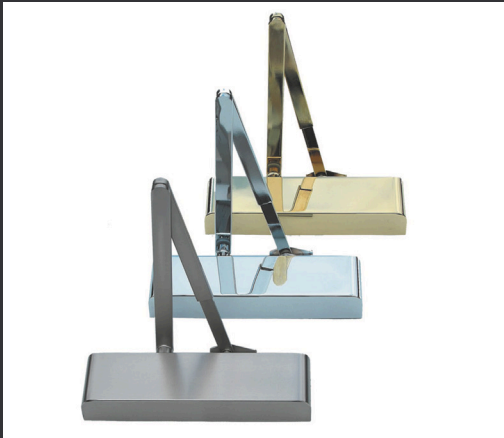
CENTRAL HINGE POSITIONS



NON-CENTRAL HINGE POSITIONS



DOOR CLOSERS



An efficient, durable and stylish variable power overhead door closer. Suitable for most applications particularly those with constant use which require a backcheck function.

CE marked against EN1154
Included in successful fire test to EN1634
Suitable for use on timber fire doors of up to 120 minutes fire resistance
High corrosion resistance
Compliant with the Equalities Act and Approved Document M

ARCHITECTURAL SLIMLINE OVERHEAD DOOR CLOSER

Code: BV3006

A high efficiency, true cam action concealed slide arm closer. Suitable for most applications particularly those with public use.

CE marked against EN1154
Fire tested to EN1634
Suitable for FD30/60 with suitable intumescent pack
High corrosion resistance
Compliant with the Equalities Act and Approved Document M



CONCEALED CAM ACTION DOOR CLOSER

Code: BV3005

LOCK CASES



Finish: SSS
DIN STANDARD LOCKCASE
BS EN 12209:2016

78mm DIN Standard centres
60mm Backset reversible latch bolt
Square and Radius forend available
Dust socket and screw fixings supplied
5mm bathroom spindle follower for universal use
Forend: 234mm x 22mm x 3mm

SASHLOCK
Code: BV3007

Finish: SSS
DIN STANDARD LOCKCASE
BS EN 12209:2016

78mm DIN Standard centres
60mm Backset reversible latch bolt
Square and Radius forend available
Dust socket and screw fixings supplied
5mm bathroom spindle follower for universal use
Forend: 234mm x 22mm x 3mm



BATHLOCK
Code: BV3008



Finish: SSS
DIN STANDARD LOCKCASE
BS EN 12209:2016

78mm DIN Standard centres
60mm Backset reversible latch bolt
Square and Radius forend available
Dust socket and screw fixings supplied
5mm bathroom spindle follower for universal use
Forend: 234mm x 22mm x 3mm

DEADLOCK
Code: BV3009

CYLINDERS



Euro Profile Cylinders
BS EN1303 Cylinder Security Grade 2
Anti – Pick
Anti – Drill
Fire rated to FD30/60

SINGLE CYLINDER

Code: BV3010

Euro Profile Cylinders
BS EN1303 Cylinder Security Grade 2
Anti – Pick
Anti – Drill
Fire rated to FD30/60



DOUBLE CYLINDER

Code: BV3011



Euro Profile Cylinders
BS EN1303 Cylinder Security Grade 2
Anti – Pick
Anti – Drill
Fire rated to FD30/60

CYLINDER AND TURN

Code: BV3012

ACCESSORIES



Finish: SSS,
Euro Profile escutcheon
10mm concealed fix
Screw fixings supplied

EURO ESCUTCHEON
Code: BV3013

Finish: SSS
EURO PROFILE CYLINDER PULL

30mm projection
43mm wide
Grade 316 for external use
Screw fixings supplied



EURO CYLINDER PULL
Code: BV30014



Finish: SSS
Bathroom Turn and Indicator with emergency release
10mm concealed fix
Screw fixings supplied

INDICATOR AND TURN
Code: BV3015

Finish: SSS
Disabled Bathroom Turn and Indicator with emergency release
10mm concealed fix
Screw fixings supplied



DISABLED INDICATOR AND TURN
Code: BV3027

ACCESSORIES



SS Grade 304

Available sizes: 200 x 19mm & 450 x 19mm

11 mm dia. bolt

15mm bolt throw

Adjustable bolt throw

Radius profile

FLUSH BOLT

Code: BV3016

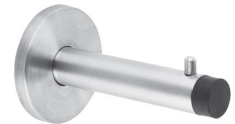
Finish : SSS, PSS

90mm Cylindrical Coat Hook/Buffer

Suitable for 13mm and 20mm

Concealed fix

Wood Screws supplied



COAT HOOK

Code: BV3017



Finish: SSS,

40mm Diameter

Screw Fixing supplied

FLOOR DOOR STOP

Code: BV3018

Finish: SSS, PSS

16 x 75mm door stop

50 x 8mm concealed rose

Screw Fixings supplied



WALL DOOR STOP

Code: BV3019

ACCESSORIES - SYMBOLS

TOILET DOOR SYMBOLS

Finish: Satin stainless steel, 3m adhesive backing, 75mm diameter



Code: BV3020



Code: BV3021



Code: BV3022



Code: BV3023

FIRE DOOR SYMBOLS

Finish: SSS, Screw fixings supplied, 75mm Diameter



Code: BV3024



Code: BV3025



Code: BV3026



Birmingham Veneers Ltd
Seeleys Road | Tyseley | Birmingham | B11 2LQ

E: sales@birminghamveneers.co.uk

T: 0121 772 5983

Freephone: 0333 600 5983

www.birminghamveneers.co.uk